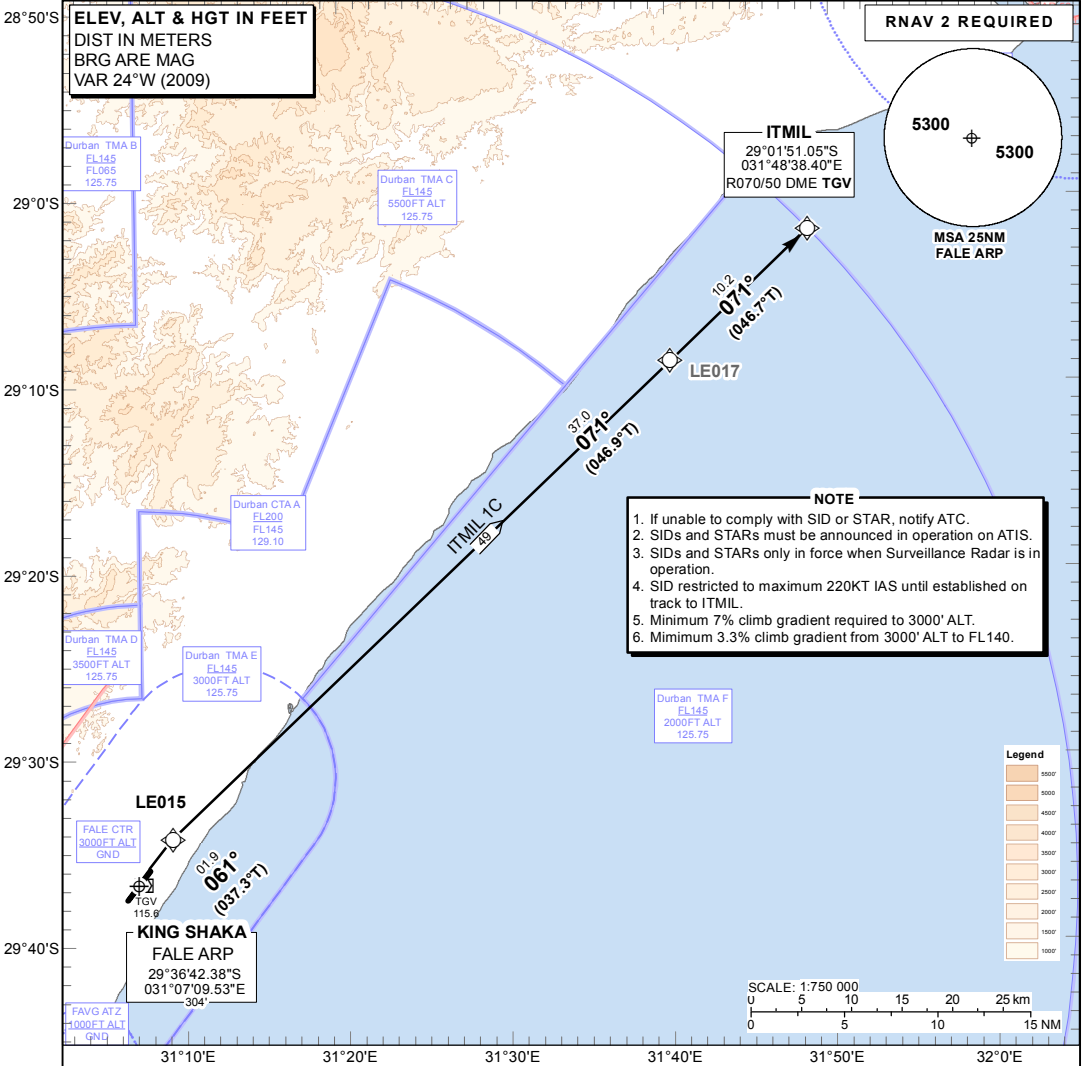


**STANDARD DEPARTURE  
CHART -  
INSTRUMENT  
(SID)**

TRANSITIONAL ALTITUDE  
**5500'**  
TRANSITIONAL LEVEL  
**ATC**

RADAR APP: 125.75  
TWR: 118.45  
GND: 121.65  
ATIS: 127.00

**DURBAN**  
(KING SHAKA INTERNATIONAL)  
**RNAV (GNSS) RWY 06**  
ITMIL 1C



**ITMIL 1C:  
RWY 06**

**Climb to FL070. Maintain RWY track to LE015. At LE015 turn right to ITMIL. Further climb will be under radar control. At ITMIL set course as per flight plan.**

**Restricted to a minimum climb gradient of 7.0% to CTR boundary.**  
7.0% @ 140KT IAS = 992 FPM  
7.0% @ 180KT IAS = 1276 FPM  
7.0% @ 220KT IAS = 1560 FPM

**COMMUNICATION FAILURE PROCEDURE (Squawk 7600)**

Maintain RWY track to LE015. At LE015 turn right to ITMIL maintaining last assigned level or MSA whichever is higher. Passing LE017 climb to flight plan level. At ITMIL set course as per flight plan.

Aircraft wishing to return must continue to the SID termination point and climb to the last assigned level or MSA whichever is higher. Enter the ITMIL hold and hold for 5 MIN. Comply with the ITMIL RNAV (GNSS) STAR Communication Failure Procedure.

CHANGE: New Format